

EMP-xx



Paper ID.

“Extended Abstract Guidelines” of The 15th Conference on Energy Network of Thailand

Author A¹, Author B², and Author C^{1*}

¹ Academic or Business Affiliation, Address, City, Province, Zip Code

² Academic or Business Affiliation, Address, City, Province, Zip Code

*Corresponding Author: E-mail, Telephone Number, Fax. Number

Summary

The instructions below are specially directed at author(s) who wish to submit a manuscript to The 15th Conference on Energy Network of Thailand. The manuscript must be clear and its format must be consistent with the other papers included in the conference proceedings which are saved on digital storage devices. Use this document as a template of your “**extended abstract**” if you are using Microsoft Word. **The extended abstracts are limited to two (2) A4-pages.** Otherwise, use this document as an instruction set. Thank you for your contribution. We are looking forward to receiving your papers.

Keywords: 3 – 5 keywords should be provided here to assist with indexing of the article.

1. Introduction

This instruction gives you guidelines for preparing extended abstract for The 15th Conference on Energy Network of Thailand. Please use this document as a template and adhere strictly to the following guidelines and format to assure rapid production of high quality conference proceedings (books and digital storage devices). Firstly, the extended abstracts should be submitted to the committee. After the notification of extended abstract acceptance, the “camera-ready” manuscript will be required. The typography, layout and style are exactly the same as those used in this instruction. Papers which do not comply with it (especially in layout geometry and typesetting) will not be included in the proceedings. No final correction will be made by the publisher.

2. Preparation

An extended abstract should contain title, author name(s), affiliation(s), and summary (with 3 – 5 keywords), main body should consist of four main parts

are “**Introduction**”, “**Methods**”, “**Results**”, and “**References**”. **The whole length is not exceeded to 2 pages of A4.** The main body of the extended abstract can be divided into sections and (optionally) subsections with sub-subsections. All fonts must be in “Browallia New”. Do not put page number in the manuscript.

2.1 Page size and format

The size of the manuscript must be A4 (210 mm x 297 mm) and it should be typed in two columns with single spacing and the following margins.

Top margin	25 mm
Bottom margin	20 mm
Left margin	25 mm
Right margin	20 mm
Column separation	7 mm

2.2. Title and author(s) information

All items in the title block should be centered across both columns. The title should be set in 16 bold

EMP-xx

type. The first letter of each word should be capitalized (do not capitalize articles, coordinate conjunctions or prepositions unless the title begins with such a word).

The author's name(s) should be set in 14 font and the list of affiliations should be set in 12 font. The affiliations should include department, university and address. For each author, a numbered superscript should be used to indicate institution affiliation. The corresponding author should be indicated by the asterisk " * " symbol and the presenting author should be identified by name underlining. The corresponding author's telephone/fax numbers and e-mail address should be provided as the final item in the title block.

3. Summary and Keywords

The summary should be typed in 14 font and fully justified (flush left and flush right) followed by a list of keywords. The titles of abstract and keywords are typed in 14 bold font, initially capitalized and flush left.

4. Main Text Body

The full text of the paper must be edited in the double column format as required and fully justified. All fonts are set in 14 font. Please do not place any additional blank lines between paragraphs.

4.1 First-order headings

The first-order headings, usually called section, should be typed in 14 bold font, initially capitalized and centered.

4.2 Second-order and third order headings

The second-order headings (sub-sections) and the third-order headings (sub sub-section) should be typed in 14 bold font, initially capitalized and flush left.

5. Figure, Table and Equations

5.1 Figure and Table

All figures and tables should be placed after their first mention in the text or after the end of first-mention

section. Large figures and tables may span across both columns. Place figure captions below the figures and centered within a column. Place table titles above the tables and flush left. If figure has two parts, include labels "(a)" and "(b)" as part of the artwork. The figures and tables are sorted separately. Please verify that the figures and tables mentioned in the text actually exist. When citing a figure(s) in the text, they should be referred as, for example, "Fig. 1" or "Figs. 1 – 3." Or Table. 1. Do not abbreviate "Table".

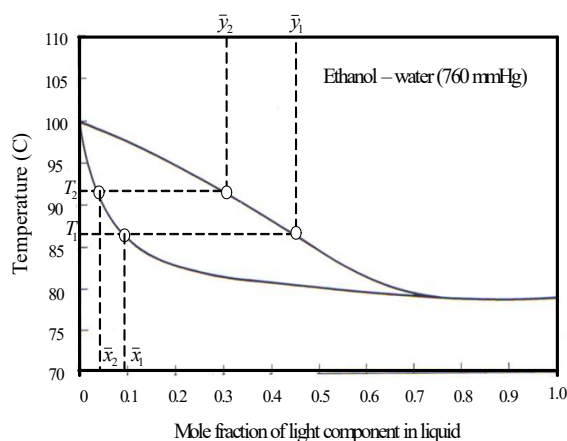


Fig. 1 Vapor-liquid equilibrium of binary mixture at constant pressure

Table. 1 Total petroleum products consumption (million liters) in Thailand by economic sector

Economic sector	Year	
	2002	2003
1. Agriculture	3,509	3,827
2. Mining	19	26
3. Manufacturing	4,821	4,937
4. Electricity	703	757
5. Construction	169	172
6. Residential and commercial	2,729	2,792
7. Transportation	23,980	25,475
Total	35,930	37,986

5.2 Equations

Equations should be placed about center and numbered consecutively. Equation numbers should be Arabic numerals enclosed in parentheses on the right-hand margin. They should be cited in the text as, for

EMP-xx

example, “Eq. (1)” or “Eqs. (1) – (3)”. Be sure that the symbols in equations are defined before the equation appears or immediately followings.

$$y = ax^2 + bx + c \quad (1)$$

6. Acknowledgement

Acknowledgements may be made to individuals or institutes who have made an important contribution.

7. References

The relevant works must be cited and listed as references at the end of the paper, in order of citation. They should be chronologically referred in the text by Arabic numerals enclosed in square brackets, e.g. [1], [1, 2], [1-3]. The reference list should be set in the same type face as the body of the text.

[1] Kar, A. and Kanoria, M. (2009). Generalized thermo-visco-elastic problem of a spherical shell with three-phase-lag effect, *Applied Mathematical Modelling*, vol.33(8), August 2009, pp. 3287 – 3298.

[2] Kato, S. and Widiyanto, A. (2001). Environmental Impact Assessment of Various Power Generation Systems, paper presented in the Tri-University International Joint Seminar & Symposium 2001, Chiang Mai, Thailand.

[3] Craglia, M. and Annoni, A. (2003). The Spatial Impact of European Union Policies, EUR 20121 EN, Ispra: European Communities.

[4] Myers, R.H. and Montgomery, D.C. (1995). *Response Surface Methodology: Process and product optimization using designed experiments*, John Wiley & Sons, New York.

[5] Department of Alternative Energy Development and Efficiency, Ministry of Energy, Thailand (2004). *Statistic Data*, URL: <http://www.dede.go.th>, access on 24/04/2010

Some example of the references to journal papers, proceedings, technical reports, books and web-based articles are provided at the end of the guidelines.

Format of References

1. Article in Journals

[1] Kar, A. and Kanoria, M. (2009). Generalized thermo-visco-elastic problem of a spherical shell with three-phase-lag effect, *Applied Mathematical Modelling*, vol.33(8), August 2009, pp. 3287 – 3298.

2. Proceedings

[1] Kato, S. and Widiyanto, A. (2001). Environmental Impact Assessment of Various Power Generation Systems, paper presented in the Tri-University International Joint Seminar & Symposium 2001, Chiang Mai, Thailand.

3. Reports

[1] Craglia, M. and Annoni, A. (2003). The Spatial Impact of European Union Policies, EUR 20121 EN, Ispra: European Communities.

4. Books

[1] Myers, R.H. and Montgomery, D.C. (1995). *Response Surface Methodology: Process and product optimization using designed experiments*, John Wiley & Sons, New York.

5. Web-Based Articles

[1] Department of Alternative Energy Development and Efficiency, Ministry of Energy, Thailand (2004). *Statistic Data*, URL: <http://www.dede.go.th>, access on 24/04/2010